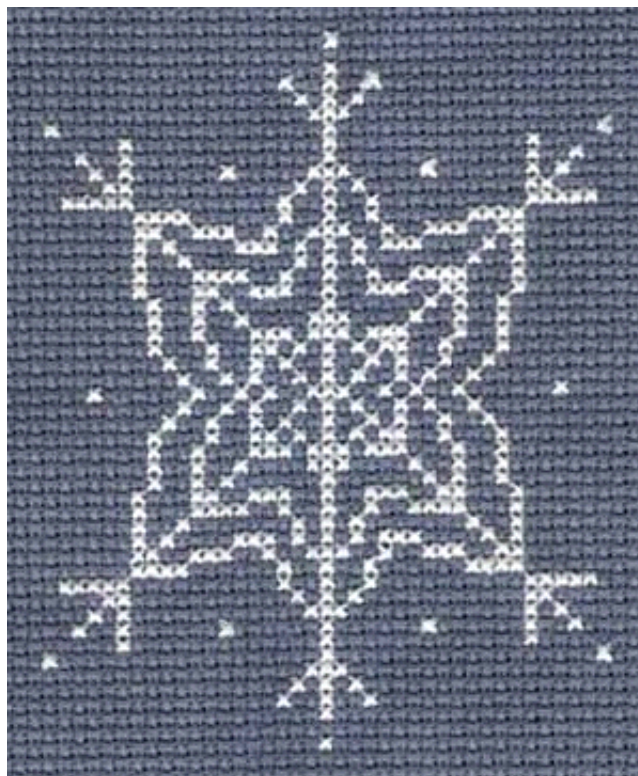
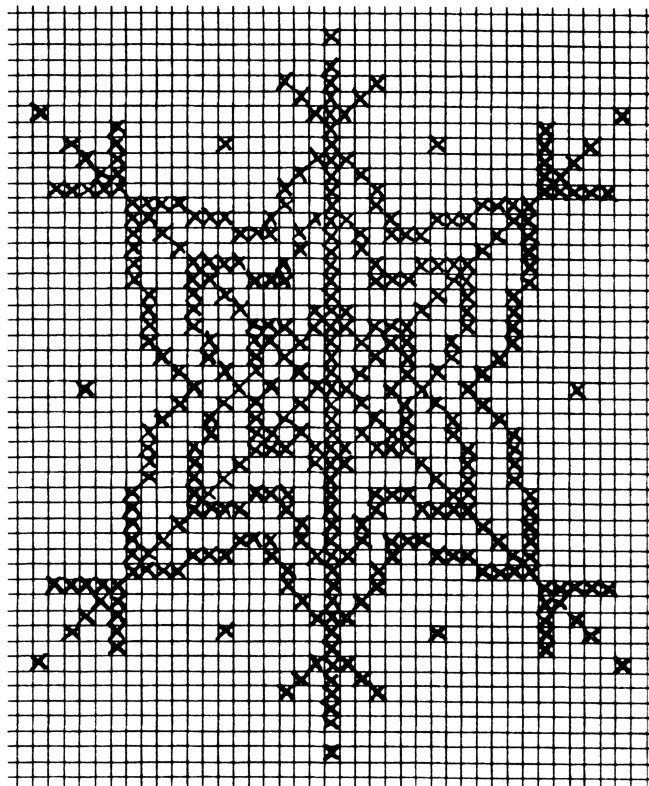


Pattern for A Stitch In Time

a Betsy Devonshire Mystery by Monica Ferris



This counted cross stitch snowflake can be worked on any dark-colored evenweave fabric or canvas in white or metallic. The designer, Denise Williams, worked it out on 14-count navy blue canvas with Balger #8 floss, for an interesting, sparkly effect. On this count, the snowflake is 3.5 inches across.

Directions: find the center of the pattern and mark it. Find the center of the fabric and begin there, marking Xs as the pattern indicates. It may be helpful to grid the pattern by drawing a line with see-through marker every five or ten squares. A corresponding line may be stitched with a single thread on the fabric. (Beginners like Betsy find this very helpful!) Pull the marker threads out when finished.

© 2000 by Denise Williams. Patterns for all the Betsy Devonshire mysteries are available for free on Monica-Ferris.com