

“Template – The Mary Monica Suite”

“Stitching the Straight and Narrow”

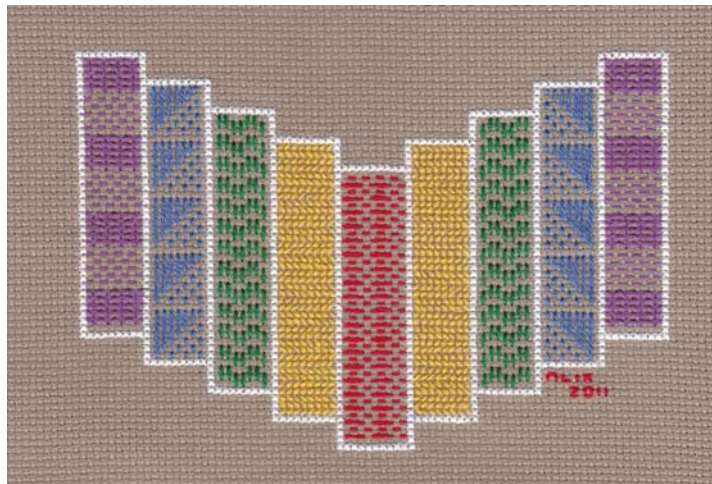
Dusty Rose Designs

Designed by

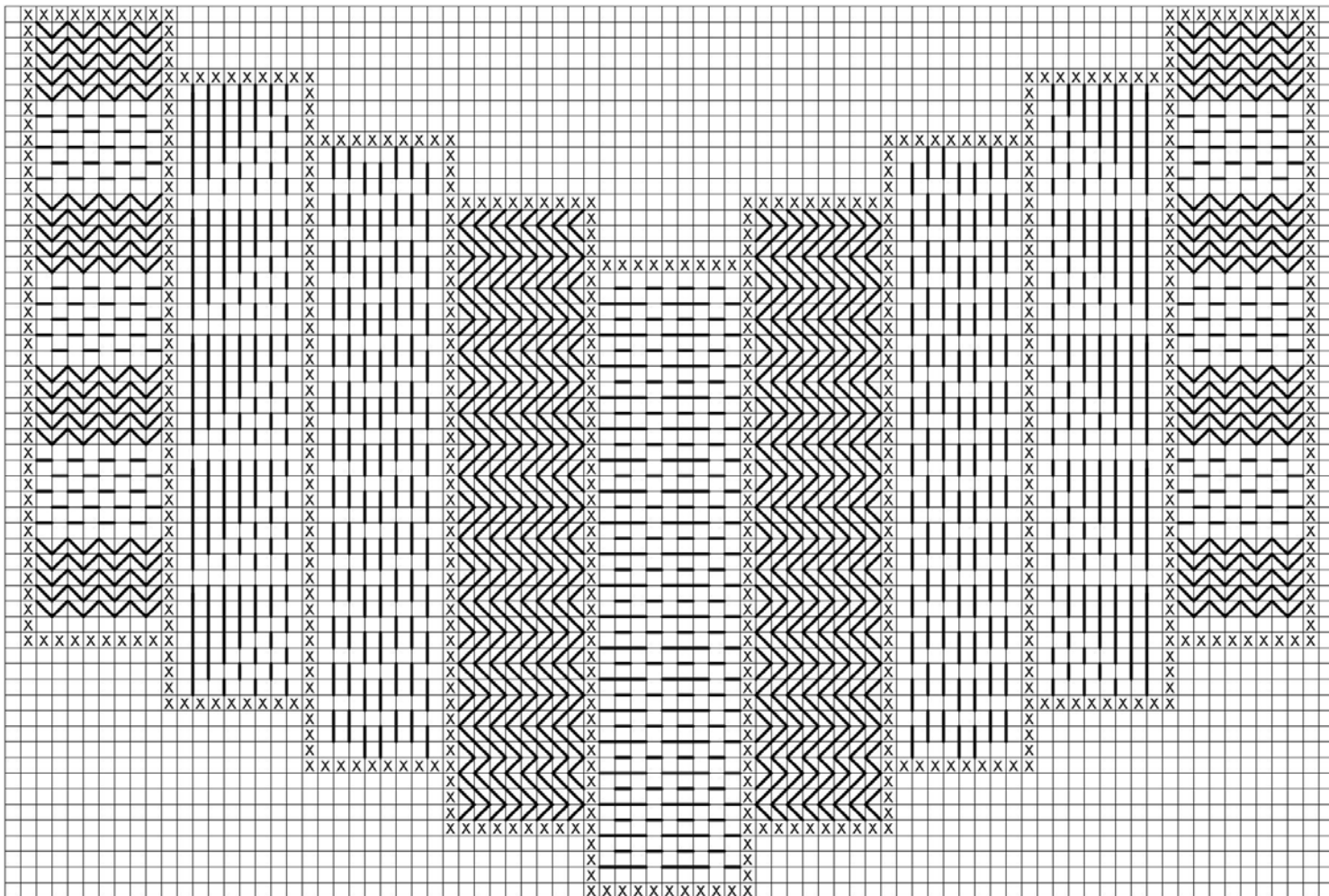
Alixandra Jordan ©2011

83 w x 57 h

Sample was stitched on 18 ct. Khaki Aida, using 2 strands of DMC cotton thread.



Note: “Template – Stitching the Straight and Narrow” is an example of pattern darning. Done entirely in straight stitch, it was used to strengthen thin fabrics or areas of clothing that would get a lot of wear and tear. (knees, elbows...)



| 1 | 2 | 3 | 4 | Middle | 6 | 7 | 8 | 9 |
|-----|-----|-----|-----|--------|-----|-----|-----|-----|
| 552 | 798 | 699 | 728 | 666 | 728 | 699 | 798 | 552 |